



Juniors may have noticed that their senior classmates exhibited a little more stress than usual this month. The first early college application deadlines are this month. Students hoping to continue pursuing the arts have also had to manage the additional burden of pre-screening/video audition materials. Yikes!

November 1st is the first big college application deadline, but what does that statement actually mean? Depending on the school and the student, it could mean:

- Using the [Common Application](#), [Coalition Application](#) and/or [Common Black Colleges Application](#) to make it simpler/faster to apply to more than one school.
- Using a school specific application like the ones used by [Boston Conservatory at Berklee](#) or [North Dakota State University](#).
- Submitting applications to schools that the student knows they are interested in attending (Early Action).
- Submitting a single application to the school that the student will commit to attending if they are accepted (Early Decision).
- Writing essays and short answers on anything from "What music should the Admissions Representative listen to while reading your application?" to "Describe a problem you've solved or a problem you'd like to solve. It can be an intellectual challenge, a research query, an ethical dilemma - anything that is of personal importance, no matter the scale. Explain its significance to you and what steps you took or could be taken to identify a solution." Click [here](#) for a list of essay questions by colleges on the Common App.
- [No application essays](#). Not all applications require them.
- Logging into their [ACT account](#) to send test scores.
- Completing SPCPA's [Transcript Request Form](#) and turning it in with \$5 per transcript for schools not on one of the shared application systems.
- Loading a recorded pre-screening into [SlideRoom](#) or [getacceptd](#).
- Following up with their recommenders to see if there is anything else they can do to facilitate that process. Click [here](#) for SPCPA's Recommendation Request form/process.
- Submit application fees. Click [here](#) for colleges with the highest application fees.
- Or not. Click [here](#) for colleges with NO application fee.

So, what does all this mean for juniors? Knowledge is power. The more pre-college thinking/planning/learning you do

Important information for college applications:

SPCPA School Code: 242 284

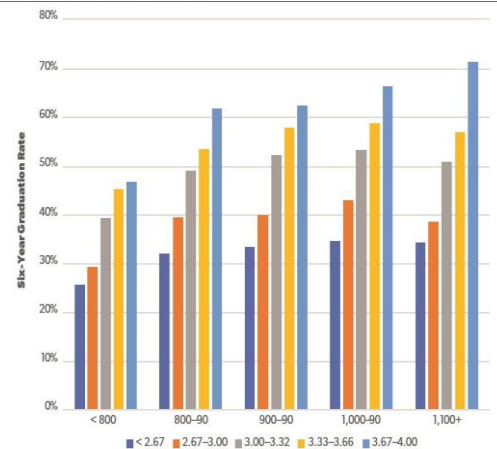
Counselor: Alison Green
(greena@spcpa.org)

School Information:
16 W 5th St
St Paul, MN 55102
(651) 290-2225

Ever wonder why colleges care about your high school grades?

The short answer is **your success impacts theirs**. Colleges demonstrate their success via graduation rates. So, they [researched the correlation between high school grades and college success](#)...

Figure 2. Six-Year Graduation Rates by SAT or ACT Scores and High School GPA, Less-Selective Public Four-Year Institutions



Source: William G. Bowen, Matthew M. Chingos, and Michael S. McPherson, *Crossing the Finish Line: Completing College at America's Public Universities* (Princeton University Press, 2009), Appendix Table 6.7.

...and what they've learned is **the higher your high school GPA the more likely you'll graduate from college**. Wondering how you compare? You could match the expected SAT score found on your PSAT score report to the chart above or you could just **find your GPA color**. Across the board, the higher the high school GPA the more likely you are to be successful in college. **The work you're doing now MATTERS!**



How do I know if I am on my Right Track?

An excellent question and one with as many answers as there are people. Getting on your personal "right track" takes action and reflection. It is an answer that evolves over each person's life. There may be times where the signposts directing you where to go next are obvious and other moments when the signals are less clear and more open to interpretation. Unlike the visual above, this journey is rarely a straight path; it's the curves that keep it interesting!

When navigating this journey, there are some key benchmarks that can help each person develop your own right track roadmap:



Self-awareness and Grit: understand your strengths and build your goals for the future around them. Learn from setbacks. Unleash your Perseverance POWER!



Teamwork and communication (written and spoken) are vital skills in college and the workplace. Be involved. Seek out mentors. Be a leader. Know when/how to advocate for oneself.



Lifelong learning is crucial. Grades matter. Grades = effort + awareness of expectations + willingness to prioritize outside expectations. Take responsibility for what you need to know.



Seek out information. Ask people what they like/dislike about their jobs. Ask what skills they think they need to be successful. Ask about career paths. Read college course descriptions.



Visit colleges to learn more now. College knowledge ranges from short-term certificate (a semester) options to degrees requiring multiple years such as Law or Medicine.



Change happens. Identify your lifelines. Look for opportunities to step outside of your comfort zone before you're forced to take the plunge. Seek out people and experiences that are unfamiliar to you.



Desired range? or What does the Middle 50% have to do with me? A lot, it turns out...

Colleges and universities track their admitted student GPAs and ACT scores. This information is aggregated and made available in an Admitted Student Profile or compiled by organizations such as [COLLEGEdata.com](https://collegedata.com) (see examples below).

Compare the information provided for **DePaul University** in Chicago...

College Admissions Tracker					
See who got in, who didn't & who's applying now. See the qualifications and admissions decisions of real students who applied to DePaul University.					
CLASS OF 2022 Profile of Students on COLLEGEdata Interested in This College					
	GPA		SAT		ACT
	UW	W	M	ERW	
Average	3.45	3.84	598	618	26
Low	2.54	2.56	480	480	19
High	4.00	5.00	780	740	34
YOU	?	?	?	?	?

[Get Admissions Tracker Results](#)

Qualifications of Enrolled Freshmen

Average GPA	3.56
SAT Math	551 average 490-610 range of middle 50%
SAT Critical Reading	569 average 520-620 range of middle 50%
SAT Writing	Not reported
ACT Composite	25 average 22-28 range of middle 50%

with **Minnesota State University – Mankato:**

College Admissions Tracker					
See who got in, who didn't & who's applying now. See the qualifications and admissions decisions of real students who applied to Minnesota State University Mankato.					
CLASS OF 2022 Profile of Students on COLLEGEdata Interested in This College					
	GPA		SAT		ACT
	UW	W	M	ERW	
Average	3.36	3.56			21
Low	1.75	2.70			16
High	4.00	4.23			29
YOU	?	?	?	?	?

[Get Admissions Tracker Results](#)

Qualifications of Enrolled Freshmen

Average GPA	3.21
SAT Math	Not reported
SAT Critical Reading	Not reported
SAT Writing	Not reported
ACT Composite	20-24 range of middle 50%

A student with a 3.0 GPA and a 21 ACT would more likely be admitted at Mankato than DePaul, because these "credentials" were within at least one average (middle 50%) for Mankato students but not DePaul.